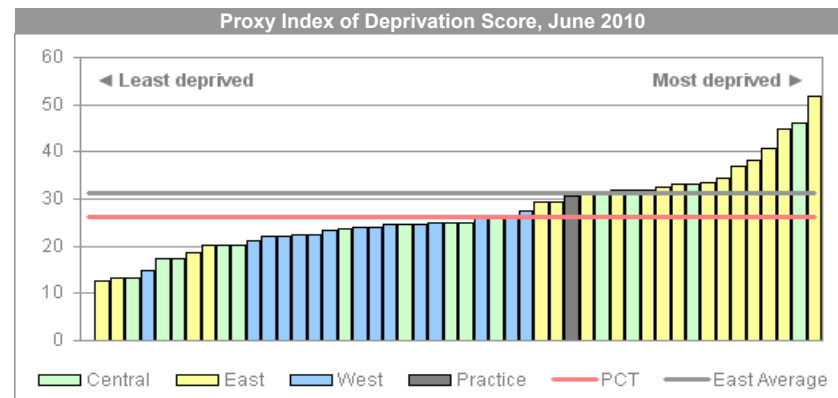
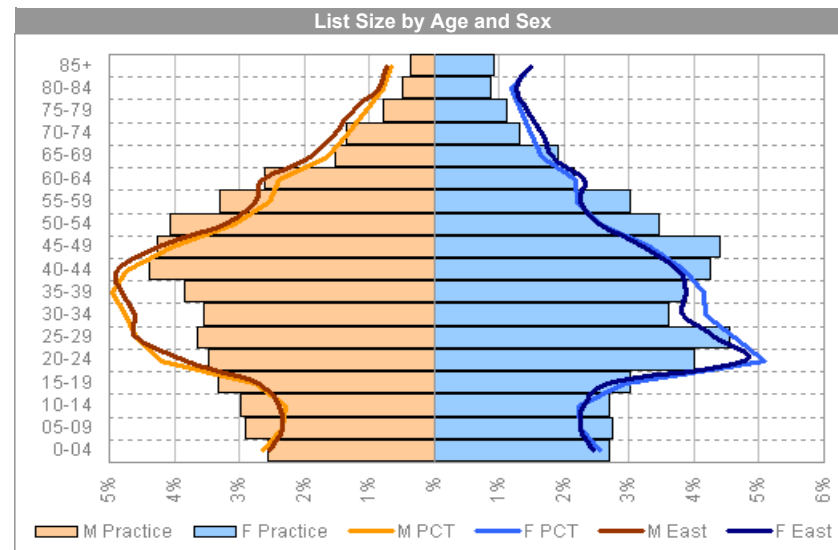


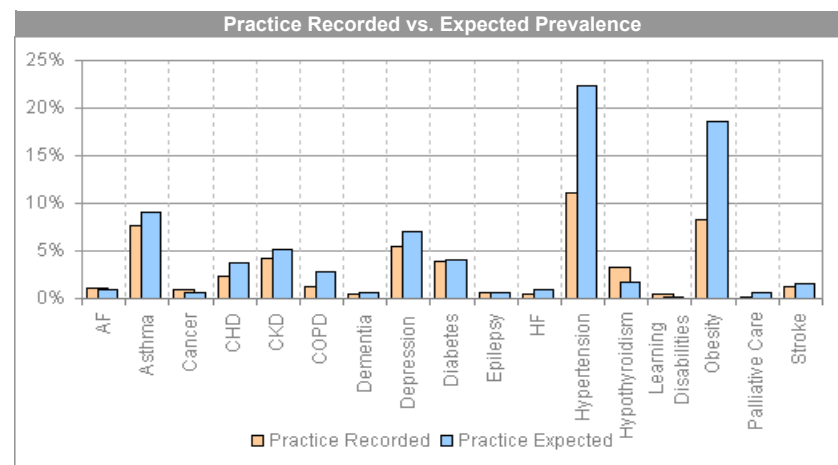
1 Practice Profile and Demographics

	Practice	Locality	PCT	National
Overall list size	11,000	5,015	6,135	
Weighted list size	11,000	5,196	5,922	
% males	49.4%	51.8%	50.7%	
% females	50.6%	48.2%	49.3%	
% patients aged less than 5	5.3%	5.0%	5.2%	
% patients aged 65 or over	10.7%	14.0%	12.6%	
Patients in nursing homes (per 1,000 patients)	0.8	3.9	4.6	
% in full-time or part-time employment	53.5%	47.6%	52.8%	49.6%
% in full-time education (aged 18+)	1.2%	2.4%	2.4%	1.9%
% unemployed	7.0%	4.3%	4.0%	4.4%
% permanently sick / disabled	11.0%	7.2%	5.6%	5.6%
% employed unable to take time off to see GP	21.3%	29.5%	27.5%	28.5%
% reporting being in "poor" health	10.6%	7.1%	5.8%	5.8%
% with carer responsibilities	8.0%	9.2%	7.3%	8.6%
Proxy Index of Deprivation score (higher = more deprived)	30.61	31.29	26.13	
Patient movers (per 1,000 patients)	6.4	12.0	9.1	
Clinical system	ISoft Synergy			
Training practice	Yes			



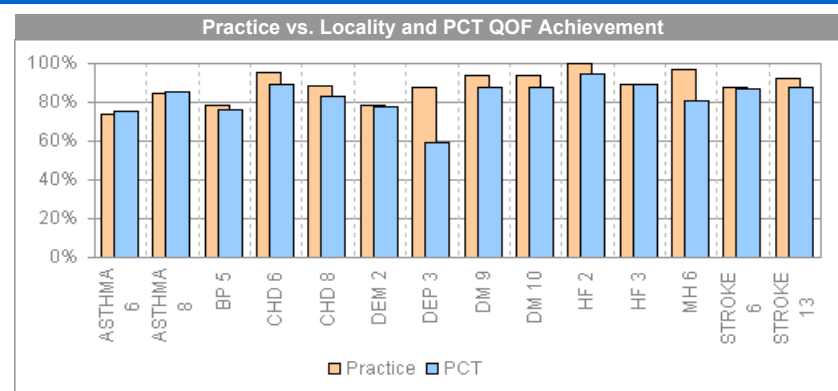
2 Recorded vs. Expected Prevalence

	Recorded Practice	Recorded Locality	Recorded PCT	Expected Practice
AF	1.1%	1.2%	1.2%	1.0%
Asthma	7.7%	5.8%	5.6%	9.1%
Cancer	0.9%	1.3%	1.2%	0.7%
CHD	2.3%	2.7%	2.4%	3.7%
CKD	4.3%	2.7%	2.7%	5.2%
COPD	1.3%	1.4%	1.1%	2.8%
Dementia	0.4%	0.3%	0.3%	0.7%
Depression	5.4%	5.6%	4.9%	7.1%
Diabetes	3.8%	3.5%	3.0%	4.1%
Epilepsy	0.7%	0.6%	0.5%	0.7%
HF	0.5%	0.6%	0.5%	1.0%
Hypertension	11.0%	10.6%	9.8%	22.3%
Hypothyroidism	3.3%	3.0%	2.8%	1.8%
Learning Disabilities	0.4%	0.3%	0.3%	0.2%
Obesity	8.2%	6.1%	5.9%	18.6%
Palliative Care	0.2%	0.1%	0.1%	0.7%
Stroke	1.3%	1.4%	1.3%	1.6%



3 QOF Achievement

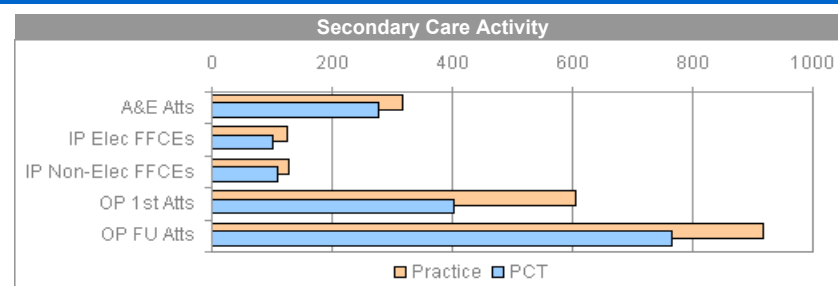
	Practice	Locality	PCT	National
ASTHMA 6	73.9%	73.0%	75.4%	78.0%
ASTHMA 8	84.7%	82.9%	85.1%	87.6%
BP 5	78.3%	79.0%	76.3%	78.7%
CHD 6	95.5%	90.4%	89.4%	89.8%
CHD 8	88.6%	83.5%	82.9%	82.1%
DEM 2	78.3%	80.3%	77.9%	79.3%
DEP 3	87.6%	49.2%	59.3%	70.1%
DM 9	93.7%	84.9%	87.6%	91.1%
DM 10	93.9%	84.9%	88.0%	90.8%
HF 2	100.0%	93.2%	94.7%	95.9%
HF 3	89.5%	87.8%	89.3%	90.0%
MH 6	97.0%	71.6%	81.0%	88.9%
STROKE 6	87.5%	88.5%	86.9%	88.1%
STROKE 13	92.3%	87.1%	87.4%	90.2%



4 Secondary Care Activity

NB: below are all per 1,000 patients

	Practice	Locality	PCT
A&E attendances	317.5	324.4	278.0
Inpatient elective first finished consultant episodes	126.2	103.9	100.0
Inpatient non-elective first finished consultant episodes	129.2	120.0	110.7
Outpatient first attendances	605.1	385.0	401.9
Outpatient follow-up attendances	917.6	809.5	765.4



5 GMS Spend

	Practice	Locality	PCT
Global sum	£x	£x	£x
Correction factor	£x	£x	£x
Total spend (Global sum + Correction factor)	£x	£x	£x
Spend per patient	£x	£x	£x
Spend per weighted patient	£x	£x	£x

Non-GMS Spend

	Practice	Locality	PCT
Baseline contract value	N/A		
Spend per patient	N/A		
Spend per weighted patient	N/A		

